



ಸಹ್ಯಾದ್ರಿ ವಿಜ್ಞಾನ ಕಾಲೇಜು, ಶಿವಮೊಗ್ಗ-577 203
(ಕುವೆಂಪು ವಿಶ್ವವಿದ್ಯಾನಿಲಯದ ಘಟಕ ಕಾಲೇಜು)



SAHYADRI SCIENCE COLLEGE, SHIMOGA-577 203

(A Constituent College of Kuvempu University)

Phone:08182-240435

Fax:08182-240138

E-mail:sahyadriscience@gmail.com

Web : www.kussc.ac.in

ABOUT BOTANY MUSEUM

The department of Botany has established a Museum in the year 1946, with few bottle specimens. Later the Museum has went on Upgradation year by Year. Now the Museum has well established. Some of the highlight of the museum are,

1. It has a specimens in the form of preserved, Dry and herbaria.
2. The specimen which are in syllabus and out of syllabus are also collected and preserved.
3. The specimens are stalked in the racks systematically
4. The specimens / Materials are belongs to the various group such as Algae, Fungi, Bryophytes, Pteridiophytes, Gymnosperms and materials which belongs to Morphology, Ecology are also well staked.
5. 200+ charts on various aspects are maintained.
6. There is a Huge collection of Permanent slides of Anatomy, Embryology, Paleobotany also have been maintained.
7. Hundreds of Angiospermic plants herbarium sheet are preserved.

Sufficient specimens / Materials / Charts / Slides / Herbarium to fulfill the needs of the students in the Degree programme.


Dr. Vittal Rao. K.S
Dept. of Chemistry
Sahyadri Science College,
Shimoga.

PRINCIPAL
SAHYADRI SCIENCE COLLEGE
(Constituent College of Kuvempu University)
SHIMOGA, Karnataka State.




Different specimens in rack




Dr. Vittal Rao. K.S
Dept. of Chemistry
Sahyadri Science Collage,
Shimoga.


PRINCIPAL
SAHYADRI SCIENCE COLLEGE
(Constituent College of Kuvempu University)
SHIMOGA, Karnataka State.






Dr. Vittal Rao. K.S
Dept. of Chemistry
Sahyadri Science College,
Shimoga.


PRINCIPAL
SAHYADRI SCIENCE COLLEGE
(Constituent College of Kuvempu University)
SHIMOGA, Karnataka State.

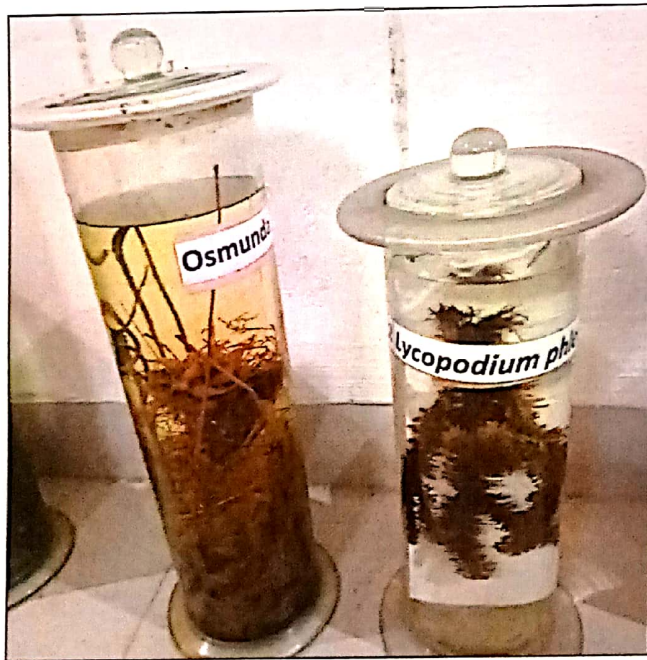



BULBI- NODULES- TENDRILS-


Dr. Vittal Rao. K.S
 Dept. of Chemistry
 Sahyadri Science College,
 Shimoga.

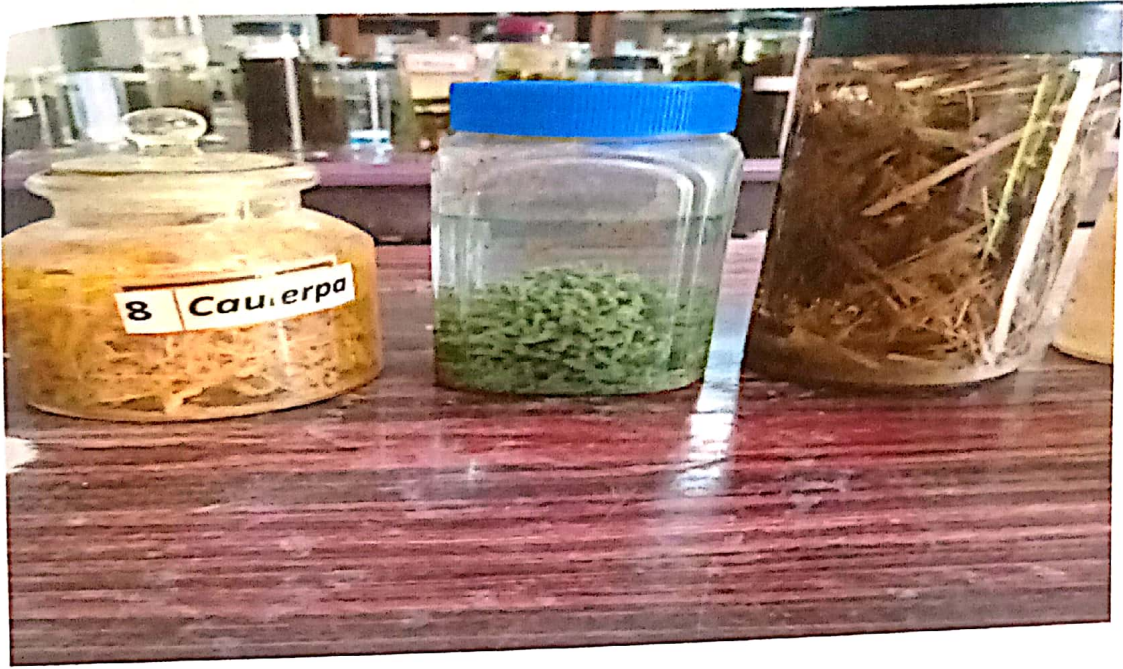

PRINCIPAL
 SAHYADRI SCIENCE COLLEGE
 (Constituent College of Kuvempu University)
 SHIMOGA, Karnataka State.


DIFFERENT ROOTS DIFFERENTS PLANT SPECIES WITH LABEL





Dr. Vittal Rao. K.S
Dept. of Chemistry
Sahyadri Science College,
Shimoga.


PRINCIPAL
SAHYADRI SCIENCE COLLEGE
(Constituent College of Kuvempu University)
SHIMOGA, Karnataka State.




Dr. Vittal Rao. K.S
Dept. of Chemistry
Sahyadri Science College,
Shimoga.


PRINCIPAL
SAHYADRI SCIENCE COLLEGE
(Constituent College of Kuvempu University)
SHIMOGA, Karnataka State.



ಸಹ್ಯಾದ್ರಿ ವಿಜ್ಞಾನ ಕಾಲೇಜು, ಶಿವಮೊಗ್ಗ-577 203
(ಕುವೆಂಪು ವಿಶ್ವವಿದ್ಯಾನಿಲಯದ ಘಟಕ ಕಾಲೇಜು)



SAHYADRI SCIENCE COLLEGE, SHIMOGA-577 203

(A Constituent College of Kuvempu University)

Phone:08182-240435

Fax:08182-240138

E-mail:sahyadriscience@gmail.com

Web : www.kussc.ac.in

DEPARTMENT OF ZOOLOGY - MUSEUM

The Department of Zoology is started in the Year 1947, home to a thriving community of researchers and students who share a fascination in how whole organisms develop, function, behave, interact and evolve. Our work bridges different levels of organization from the cellular basis of animal form, function and behavior to the interactions between organisms. The Museum plays a vital role in many aspects of the Department's working life. Its specimens are regularly used in our undergraduate teaching programme, with many final year students undertaking assessed projects in the Museum with the Professors of the department as their supervisors.

The museum has many rare and precious specimens collected from various places and presented neatly. The specimens are classified systematically and arranged in order. The museum serves as an aid in teaching the students of Zoology at degree level. It is also valuable source of materials for research students too. Museum displaying hundreds of specimens spanning the entire animal kingdom, from Elephant skeleton, to Birds, Reptiles, Insects and Molluscs. We have Embryos, Stuffed animals, Skeletons and Bones of various animals. The museum is part of the Department of Zoology, Sahyadri Science College, Shivamogga welcomes lot of students every year and fulfills a significant teaching, Research and Educational role both within college and to the wider community. Specimens in the museum provide information on evolution, exploration and conservation and highlight the diversity of animal life. Our collections are amongst the best in the state. They are used for academic study by researchers and students across the Karnataka.

Dr. Vittal Rao. K.S
Dept. of Chemistry
Sahyadri Science College,
Shimoga.

PRINCIPAL
SAHYADRI SCIENCE COLLEGE
(Constituent College of Kuvempu University)
SHIMOGA, Karnataka State.



INVERTEBRATE COLLECTION

Our Invertebrate collection includes fluid preserved specimens as well as skeletal elements of organisms belonging to a range of phyla spanning from Phylum Porifera to Phylum Echinodermata. The large horseshoe crab, corals, *Nautilus* and Triton's trumpet shells are a few highlights of our massive invertebrate collection.

INSECTS

We have a miscellaneous collection of Invertebrates which include terrestrial, freshwater, and brackishwater species collected from around the Shivamogga as well as from different regions of Karnataka.

The Entomology section consists of whole specimens, appendages mounted on microscopic slides and a fluid collection. Specimens are varied – Butterflies, Dragonflies, the Praying mantis, Cockroaches and Grasshoppers etc. The butterfly collection is particularly extensive with native and exotic species being attractively displayed.

FISH COLLECTION

The museum also maintains a variety of fluid-preserved and stained fish. The range of specimens include those found in fresh, brackish and marine waters. Collections of endemic freshwater and commercially important species are some of the highlights.

HERPETOFAUNAL COLLECTION

The collection of herpetofauna includes a wide range of Amphibians – Toads, Frogs, Salamanders, Newts, Caecilians and Reptiles – Snakes, Lizards, Crocodiles, Tortoises and Turtles. Some local species are also among the specimens.

AVIAN COLLECTION

The avian collection consists of skins, stuffed specimens, and bones of many bird species and some eggs and nests. Kept safe in a closely controlled environment, this collection contains many of the Museum's most iconic treasures including a whole ostrich skeleton.



Dr. Vittal Rao. K.S

Dept. of Chemistry
Sahyadri Science College,
Shimoga.



PRINCIPAL

SAHYADRI SCIENCE COLLEGE
(Constituent College of Kuvempu University)
SHIMOGA, Karnataka State.



MAMMAL COLLECTION

One of the most extensive in terms of the number of species covered, we are in possession of a variety of skulls, skeletons and wet-preserved mammals. Whole skeletons of some native species such as the sloth bear and leopard are also on display. The mammal section also includes human skeletal specimens.

HISTOLOGICAL / SLIDE COLLECTION


The museum houses a collection of slides – single celled to multicellular organisms, of both invertebrates and vertebrates. Most slides were prepared at the department while a few have been brought in from external sources.


OSTEOLOGY COLLECTION

The Osteology Collection has whole specimens and skeletal parts (skull, limbs, girdles) of a range of taxa . This collection offers an excellent resource for undergraduate teaching. Skeletal remains of some native species are also found here.

LIST OF MUSEUM SPECIMENS

Description	Number
Preserved Specimens in Glass- Jars	416
Dried and stuffed specimens	29
Framed specimens	5
Articulated Skeletons	13
Disarticulated Skeletons	6 Animals
Skulls	25
Horn	1
Carapace-Plastron	1
Corals	12
Larval forms and lifecycle	18
Gastropod and Cephalopod Shells	7
Nest and Hives	12
Apiary Model	1
Permanent Slides	561
Charts	102


Dr. Vittal Rao. K.S
Dept. of Chemistry
Sahyadri Science College,
Shimoga.


PRINCIPAL
SAHYADRI SCIENCE COLLEGE
(Constituent College of Kuvempu University)
SHIMOGA, Karnataka State.

Images of Museum



Specimens direct views



Specimens side views

Dr. Vittal Rao. K.S
Dept. of Chemistry
Sahyadri Science College,
Shimoga.

PRINCIPAL
SAHYADRI SCIENCE COLLEGE
(Constituent College of Kuvempu University)
SHIMOGA, Karnataka State.




Phylum: Porifera




Phylum: Mollusca



Class : Fishes


Dr. Vittal Rao. K.S
Dept. of Chemistry
Sahyadri Science College,
Shimoga.

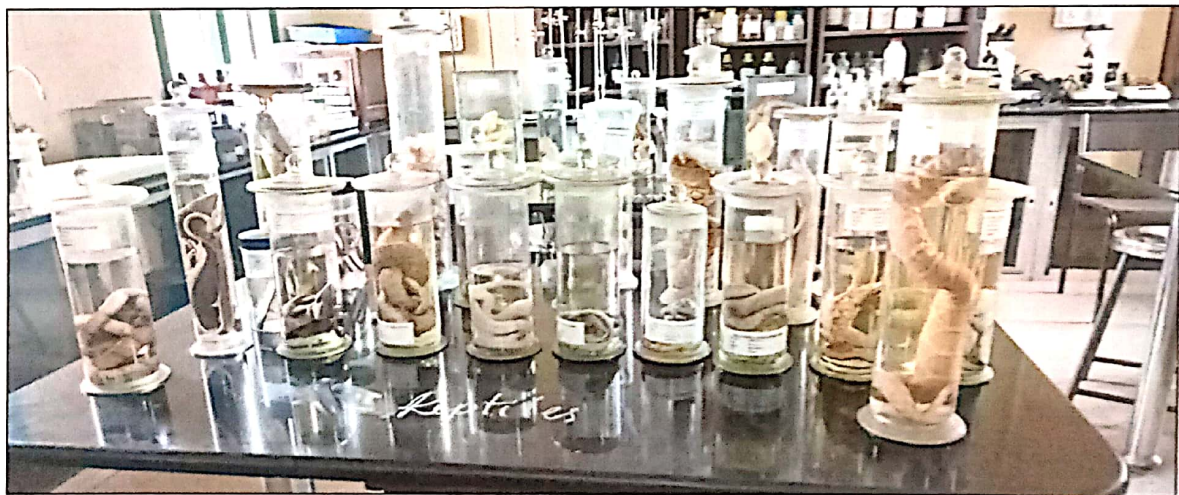

PRINCIPAL
SAHYADRI SCIENCE COLLEGE
(Constituent College of Kuvempu University)
SHIMOGA, Karnataka State.




Class: Amphibians

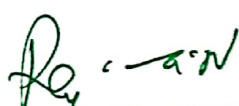


Reptiles-Snakes and Varanus



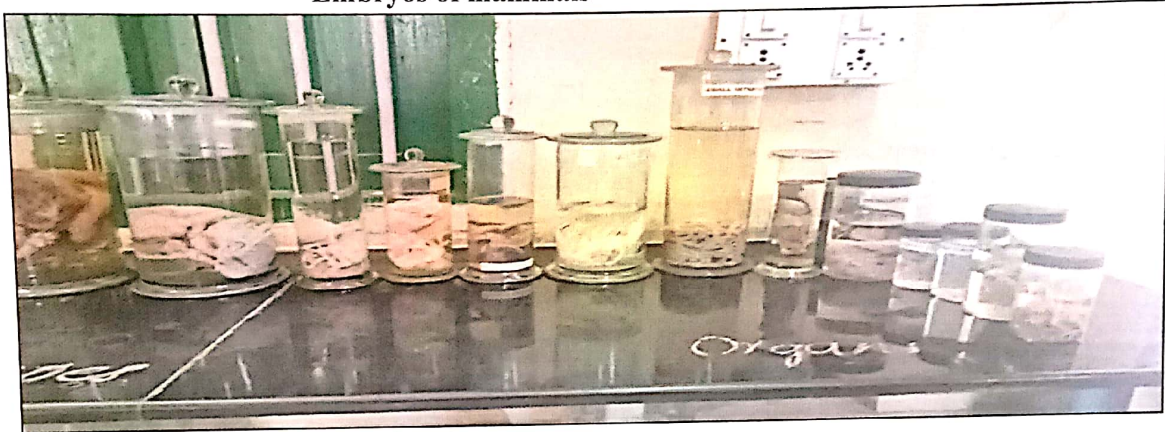
Class: Reptiles


Dr. Vittal Rao. K.S
Dept. of Chemistry
Sahyadri Science College,
Shimoga.


PRINCIPAL
SAHYADRI SCIENCE COLLEGE
(Constituent College of Kuvempu University)
SHIMOGA, Karnataka State.




Embryos of mammals



Organs




Skulls



Dr. Vittal Rao. K.S
Dept. of Chemistry
Sahyadri Science College
Shimoga.


PRINCIPAL
SAHYADRI SCIENCE COLLEGE
(Constituent College of Kuvempu University)
SHIMOGA, Karnataka State.



Students interactions


Dr. Vittal Rao. K.S
Dept. of Chemistry
Sahyadri Science College,
Shimoga.


PRINCIPAL
SAHYADRI SCIENCE COLLEGE
(Constituent College of Karnataka University)
SHIMOGA, Karnataka State.



ಸಹ್ಯಾದ್ರಿ ವಿಜ್ಞಾನ ಕಾಲೇಜು, ಶಿವಮೊಗ್ಗ-577 203
(ಕುವೆಂಪು ವಿಶ್ವವಿದ್ಯಾನಿಲಯದ ಘಟಕ ಕಾಲೇಜು)



SAHYADRI SCIENCE COLLEGE, SHIMOGA-577 203

(A Constituent College of Kuvempu University)

Phone:08182-240435

Fax:08182-240138


E-mail:sahyadriscience@gmail.com

Web : www.kussc.ac.in

REGARDING GEOLOGY MUSEUM

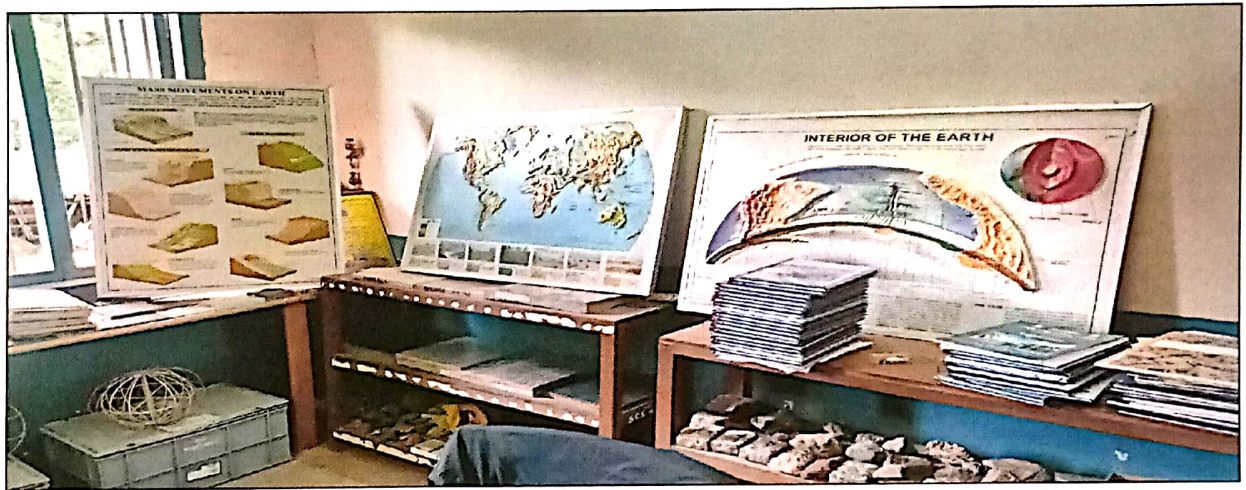
Geology department started in the year 1949. The first HOD was sir Subaraya Mudliar and he also principal of Sahyadri college. During his Period Geology Museum Came into exist. Beginning, the Specimens of Rocks, Minerals and Ores minerals are donated from various geological department of our state. Gradually number of specimens added during the course of time. Till now Geology Museum contain **532** Rock Specimen, **932** Minerals, **40** Ore Minerals, **317** fossils specimens, **129** Rocks and mineral thin sections, **128** Gem minerals, **19** Crystal glass models, **16** models showing structure, Physiography and Erosion. Wood fossil and Literate Brick included. There are 7 chart showing tectonic event, Physiography of India, Karnataka, World map are included.






Dr. Vittal Rao. K.S
Dept. of Chemistry
Sahyadri Science College,
Shimoga.


PRINCIPAL
SAHYADRI SCIENCE COLLEGE
(Constituent College of Kuvempu University)
SHIMOGA, Karnataka State.







Dr. Vittal Rao. K.S
Dept. of Chemistry
Sahyadri Science College,
Shimoga.



PRINCIPAL
SAHYADRI SCIENCE COLLEGE
(Constituent College of Kuvempu University)
SHIMOGA, Karnataka State.



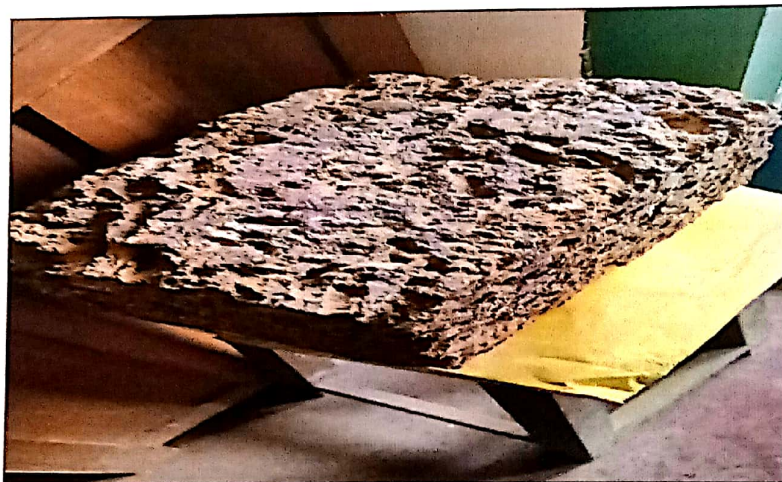

Dr. Vittal Rao. K.S
 Dept. of Chemistry
 Sahyadri Science College,
 Shimoga.



PRINCIPAL
 SAHYADRI SCIENCE COLLEGE
 (Constituent College of Kuvempu University)
 SHIMOGA, Karnataka State.




Dr. Vittal Rao. K.S
 Dept. of Chemistry
 Sahyadri Science College,
 Shimoga.


PRINCIPAL
 SAHYADRI SCIENCE COLLEGE
 (Constituent College of Kuvempu University)
 SHIMOGA, Karnataka State.




Dr. Vittal Rao. K.S
Dept. of Chemistry
Sahyadri Science College,
Shimoga.


PRINCIPAL
SAHYADRI SCIENCE COLLEGE
(Constituent College of Kuvempu University)
SHIMOGA, Karnataka State.



Dr. Vittal Rao. K.S
Dept. of Chemistry
Sahyadri Science College,
Shimoga.

PRINCIPAL
SAHYADRI SCIENCE COLLEGE
(Constituent College of Kuvempu University)
SHIMOGA, Karnataka State.